

GLORIA m. 21-28
 m. 81-88
 MELMAN m. 29-35
 m. 94-104

IT'S SHOWTIME

(Lights come up on the zoo. The ANIMALS are preparing for the ZOO GUESTS to arrive.)

Zookeepers m. 69-88
 MARTY m. 60-64

Bright Pop, swing 8ths

4 ALEX:

Time to go, got a

6

real big show and it's al-most time...

9

Got - ta give the ol' hair a blow and my

11 **MARTY:**

teeth a good shine. Gon-na give a good

14

sheen to the e-bon-y and i - vo-ry.—

17

Crowd's gon-na go wild when they see my best

19

Gene... Gene Kel - ly I mean!

21 **GLORIA:**

Gon-na do my toes,— gon-na do my nails,

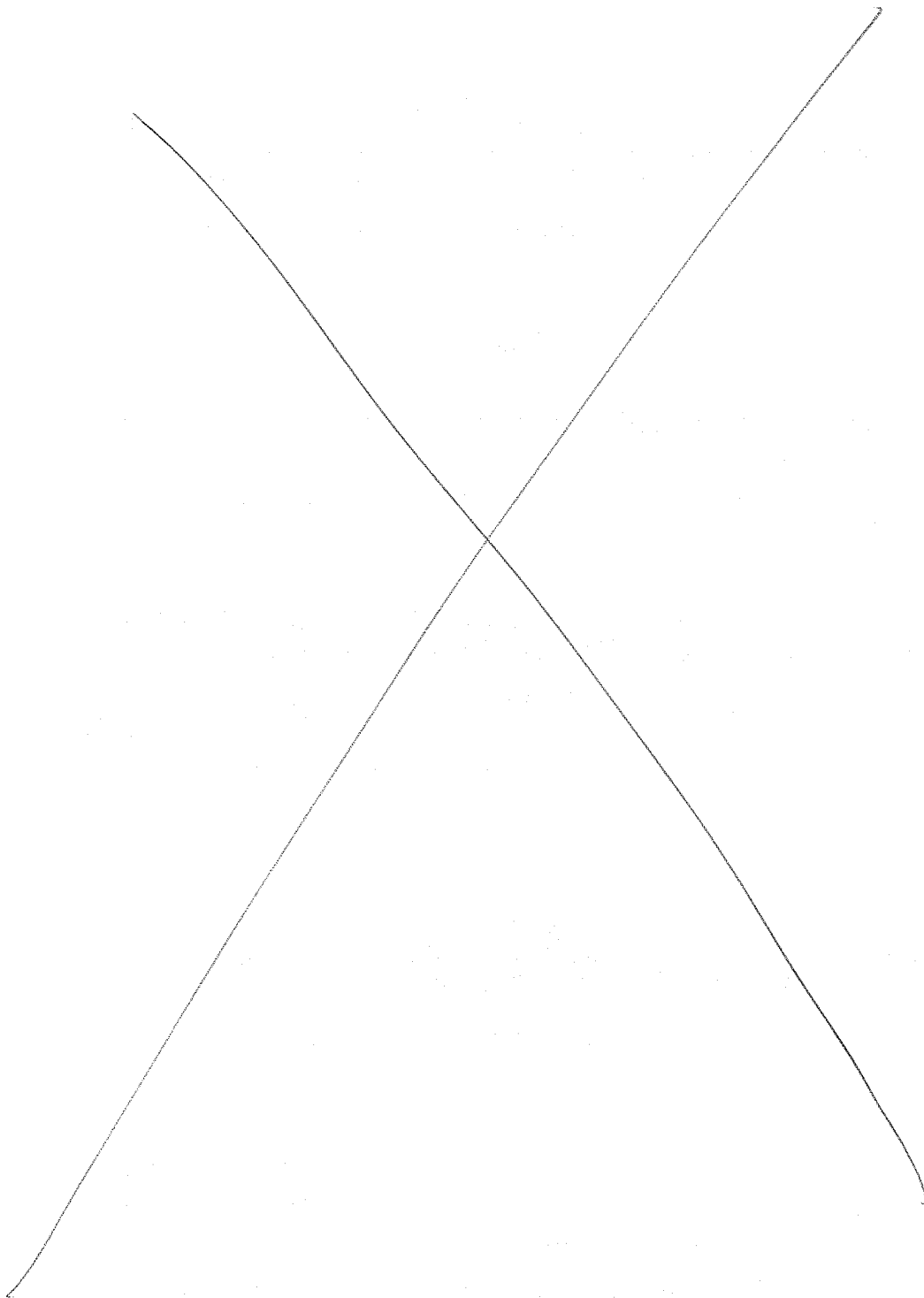
23

— a lit-tle make - up nev-er fails.— A girl should al-

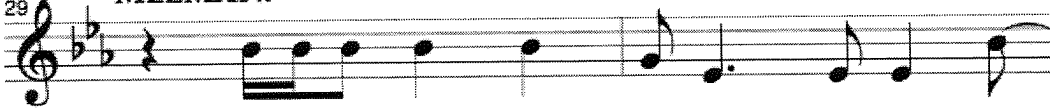
26

ways look her best when she's this blessed


- ways look her best. — when she's thus dressed.



MELMAN:

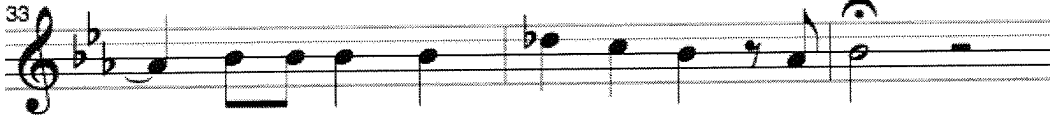
29 

Try-in' to drag my bo - dy out of bed.

31 

— I can't do the show — with this ach - ing head.

Poco rit.

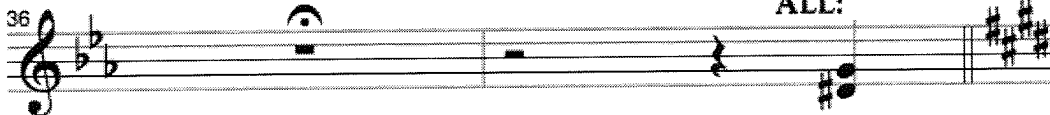
33 

— May-be I should see the doc in - stead...

ALEX: GUYS! It's ten o'clock. It's showtime!


(The ZOO GUESTS gather to see the ANIMALS. The ZOOKEEPERS serve as guides and guards.)

Fanfare

36 

ALL:


It's

38 

show-time... — show-time... — show-time... —

Faster

ZOOKEEPER ZELDA:
Welcome to the Central Park Zoo!

41 

at the Cen - tral Park Zoo!

ZOOKEEPER ZEKE: Featuring more than one hundred and fifty species from around the world!

(ZOOKEEPER ZEKE:)

43 **4**

It's Show-time!

ZOOKEEPER ZOE: Why not start your adventure in our African Savanna section, and say hello to Marty, the Zebra!
(Lights come up on MARTY.)

Funky

4 ZOOKEEPERS:

49

Crack-a-lack-in', He's so Crack-a-lack-in'

55

Crack-a-lack-in', He's so crack-a-lack-in'

MARTY: Gather 'round, people, gather 'round! Marty the Zebra is in the hizzy! Live and in beautiful black and white!

(MARTY:)
(rapped)

57 **3** **60**

My name is

61

Mar - ty, and I'm a ze - bra. I ain't a

62

horse and I ain't no Lib - ra. I real - ly

63

know how to put on a show. Give me a

(MARTY:) Yeah! You don't
see THAT on Animal Planet!

64

groove and watch me go... Look out!

ZOOKEEPERS,
ZOO GUESTS:

MARTY: Crack-a-lackin'!

69

Crack-a - lack - in', He's so Crack-a - lack - in'

71

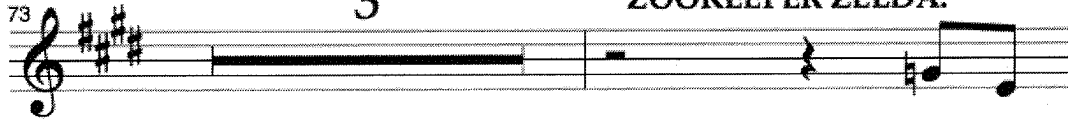
Crack-a - lack - in', He's so crack-a-lack - in'

ZOOKEEPER ZEKE: Wanna see the
third largest land animal on Earth?
Visit Gloria the Hippo! (*GLORIA enters.*)
GLORIA: Haaaaay!

Slightly slower and funky

3

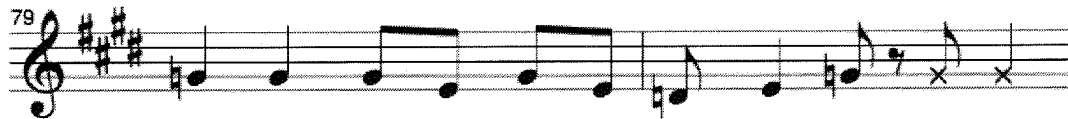
ZOOKEEPER ZELDA:



She's a



hip hip hip-po, she's round down - town, she shakes a



hip hip when she walks, it makes this sound...It goes:

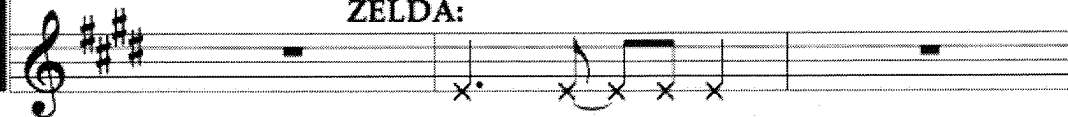
GLORIA:



Boom! Boom!

Boom! Boom!

**ZOOKEEPER
ZELDA:**



Boom! Boom! It goes...

84 (GLORIA:)

I'm a hip hip hip-po. Yeah, I'm a

ZOOKEEPERS,
ZOO GUESTS:

Boom! Boom! Boom! Boom!

(GLORIA:) Bye babies!

87

hip hip hip - po. _____

Boom! Boom!

ZOOKEEPER ZEKE: Attention patrons. The giraffe exhibit is now closed. *(The ZOO GUESTS groan.)* Please make sure our giraffe, Melman, feels better by allowing him his privacy.

Reggae 4

89

(ZOOKEEPER ZEKE:) We apologize for any inconvenience. *(Lights up on MELMAN.)*

3 MELMAN:

93

I

A tempo

97

had to call in sick to - day. I

Detailed description: This block contains the first line of musical notation, measures 97 through 100. It is written on a single treble clef staff with a key signature of three sharps (F#, C#, G#). The melody consists of quarter and eighth notes with rests. The lyrics 'had to call in sick to - day. I' are positioned below the staff.

100

took a blood test and an x - ray. On my

Detailed description: This block contains the second line of musical notation, measures 100 and 101. It continues on the same treble clef staff and key signature. The melody features eighth and quarter notes. The lyrics 'took a blood test and an x - ray. On my' are positioned below the staff.

Poco rit.

102

back I found an-oth-er spot. I'm not feel-ing so hot.

Detailed description: This block contains the third line of musical notation, measures 102 through 105. It continues on the same treble clef staff and key signature. The tempo marking 'Poco rit.' is placed above the staff. The melody includes quarter, eighth, and half notes. The lyrics 'back I found an-oth-er spot. I'm not feel-ing so hot.' are positioned below the staff.

